

somfy®

Connected Doorlock



notice



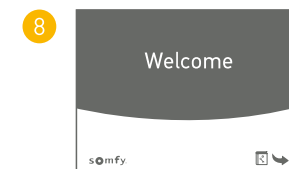
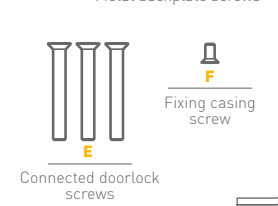
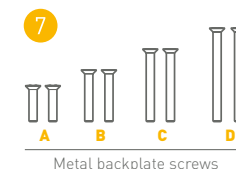
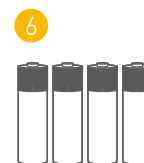
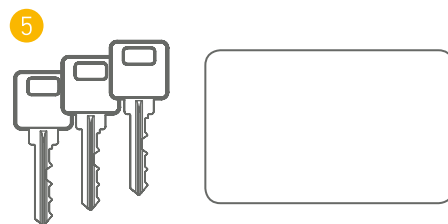
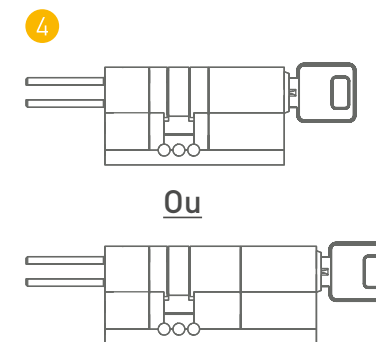
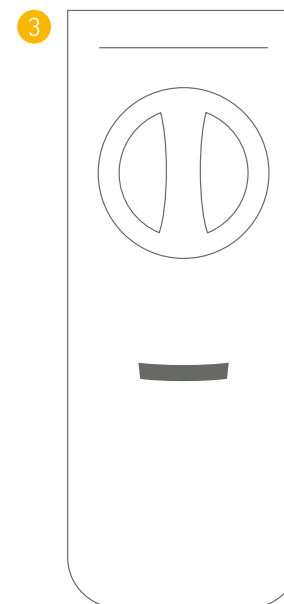
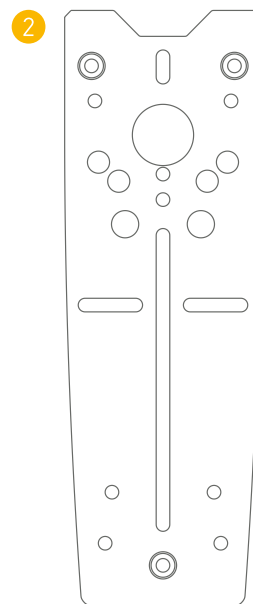
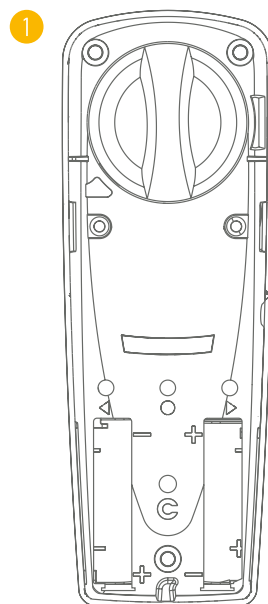
PA2045B1

Table of contents




Content of the pack.....	3
Replacement of the cylinder of origin	5
Adjustment of Somfy cylinder	6
Installation of the connected doorlock.....	8
Adding an Internet gateway.....	12
Fonctionnalités of the gateway.....	13
Reset of the connected doorlock.....	14
Resynchronization of the connected doorlock	15
Batteries	16
Technical characteristics	17
Light codes of the connected doorlock	19
Light codes of the gateway	20
Information	21

Content of the pack

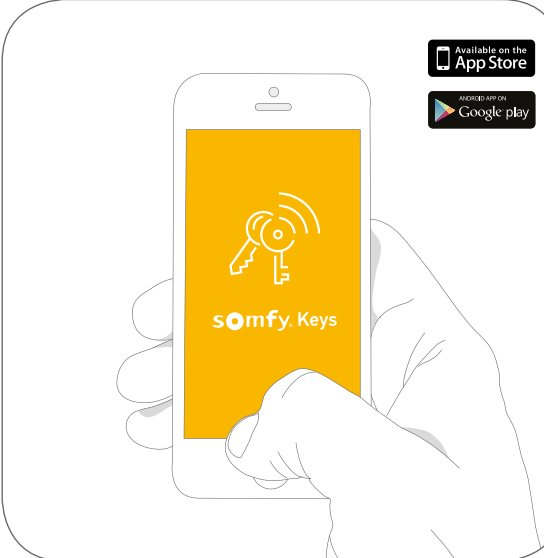
- 1 Motor
- 2 Back plate
- 3 Metal casing
- 4 Cylinder (2 lengths available according to the reference)
- 5 3 keys + property card
- 6 4 lithium AAA batteries
- 7 Bolting kit
- 8 Quick Start Guide



Installation of the connected doorlock

-  Doorlock equipped with a European standards cylinder.
-  Different thicknesses of doors (up to 9cm).
-  Multipoint locks. Doors with and without outside handle.

Check your door and smartphone compatibilities on somfy.fr.



Download the free mobile application «Somfy Keys» and create your account.



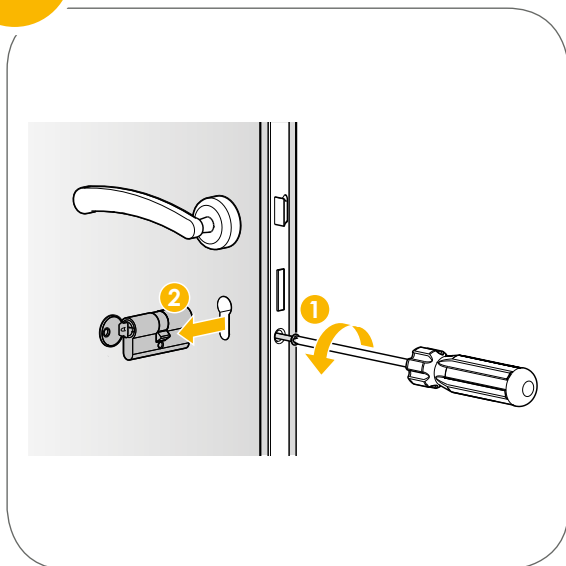
30 min

EASY
Quick
No drilling
Wireless

PRECAUTIONS
The installation has to be done along the bottom inside surface of the door.

Replacement of the cylinder of origin

1 Remove the existing cylinder

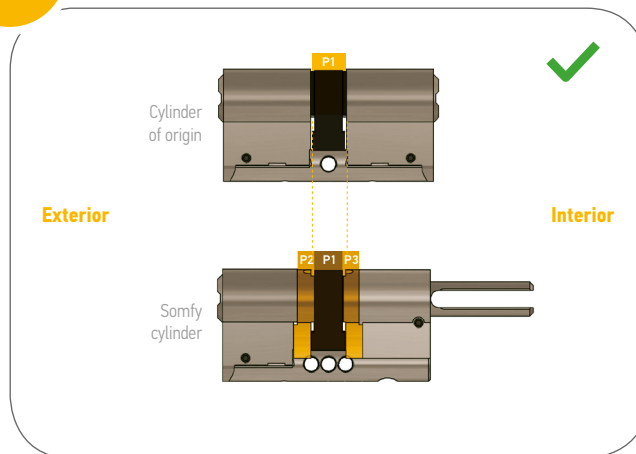


Insert your key in the cylinder of origin.

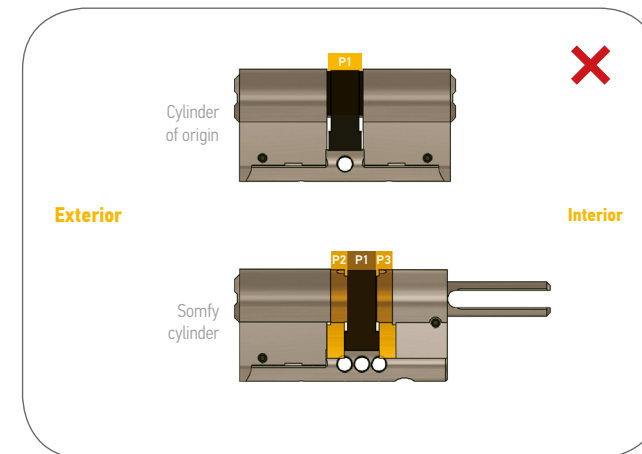
Unscrew the screw (1) located right down the latch. The latch is the moving part which locks your door. It is a long screw (about 6cm). Set it aside for the next steps of the installation.

Remove the cylinder (2).

2 Compare the key blades alignment of your cylinder and the Somfy ones



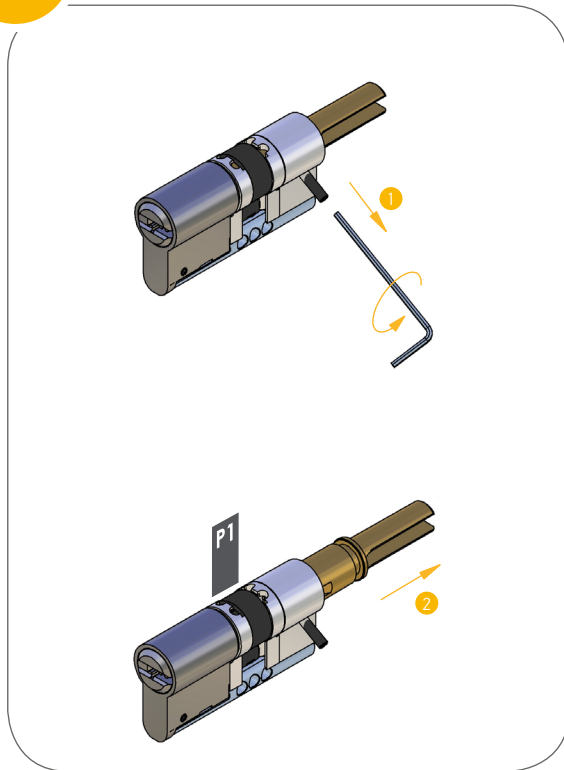
If the 2 key blades are aligned, you can follow the installation by clicking [here](#) (page 8).



Otherwise, the cylinder Somfy needs to be modified to match the door, go to the next page.

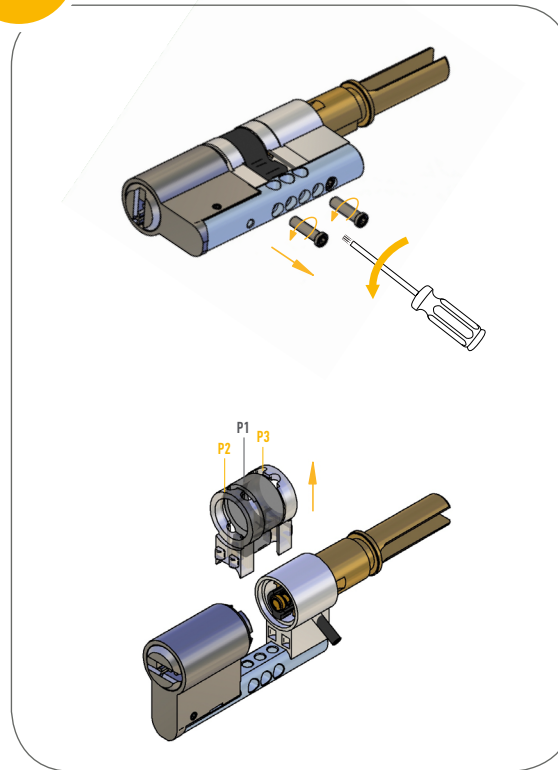
Adjustment of Somfy cylinder

1 Unlock the fork



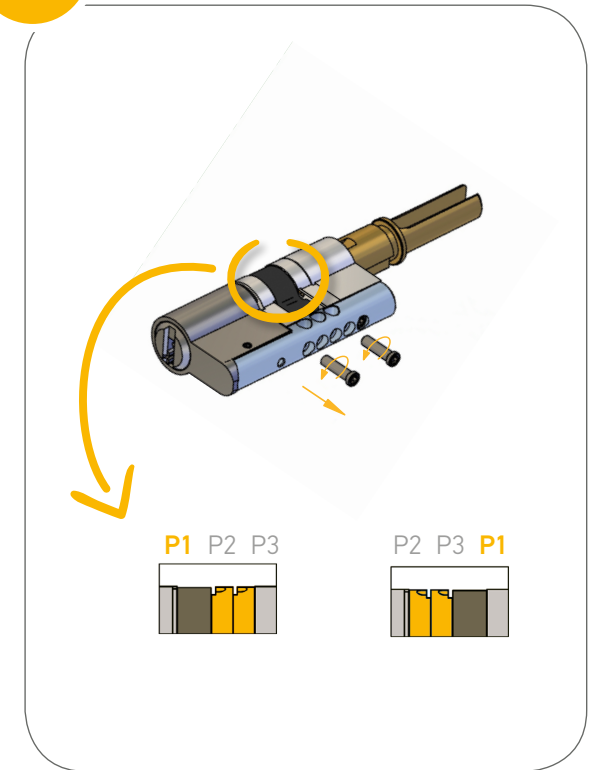
Unscrew the pin (1) with the Allen key.
Then, pull on the gold metallic fork (2), to release the key blade P1.
Please do not entirely remove the fork.

2 Remove the moving pieces



In order to release the key blade P1 and the pieces P2 and P3, unscrew the fixing screws located under the cylinder.
Depending on the pieces you need to move, remove the key blade P1.

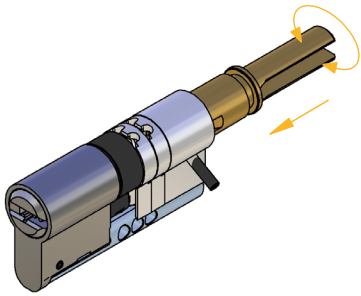
3 Replace the pieces



As a reminder, the key blade P1 of the Somfy Cylinder needs to be aligned with the key blade of the cylinder of origin. Respect the direction of the notches when you put the metallic pieces P2 or P3 back.

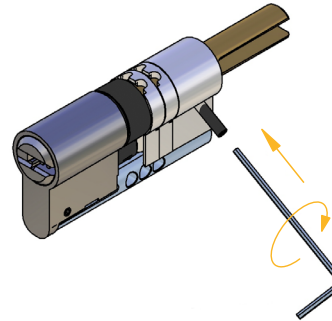
Adjustment of Somfy cylinder

4



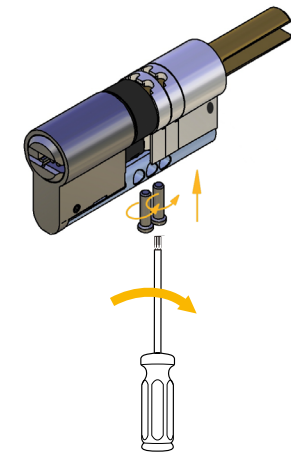
Push the gold metallic fork back into the cylinder, completely to the end.

5



Make sure the black key blade P1 rotates correctly, then screw the pin back.

6



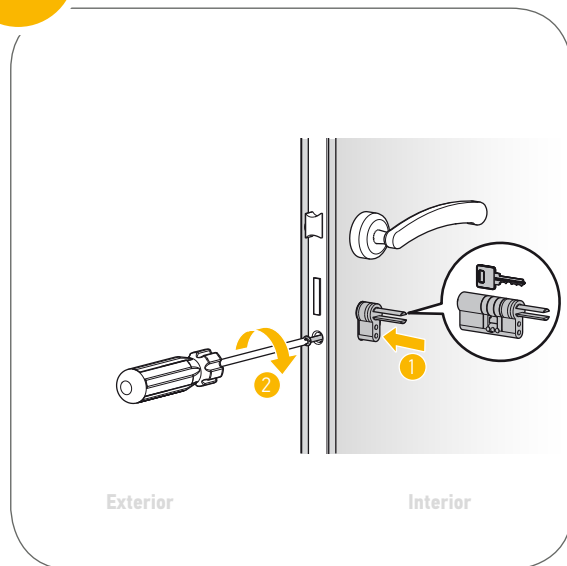
Finally, screw the fixing screws.

Insert the key in the cylinder Somfy,
and check it is operating accurately.

YOUR NEW CYLINDER IS NOW READY !

Installation of the connected doorlock

1 Cylinder installation

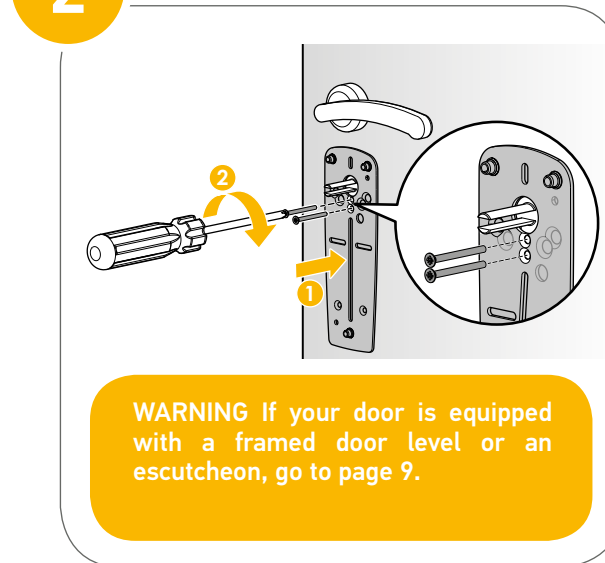


Introduce the cylinder Somfy from the inside of the door (1). You have to find the position in which the cylinder can make the lock rotate.

Screw the long screw back on the edge of the door (2).

Using the keys supplied, check the smooth running of the whole mechanism.

2 Back plate mounting



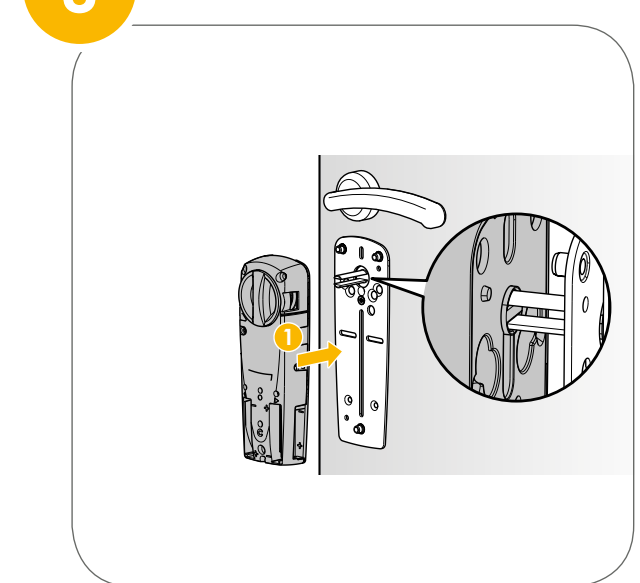
WARNING If your door is equipped with a framed door level or an escutcheon, go to page 9.

Stick the back plate around the cylinder with double-sided adhesive tape supplied.

In the screw bag (supplied into the cylinder box) choose 2 identical screws. They will fix the metallic back plate on your door (in addition to the double-sided adhesive tape supplied). You can choose from several sizes : models **A**, **B**, **C** ou **D**.

Choose the screw length adapted to the distance between the back plate and the cylinder. Screw the 2 screws into the cylinder, through the back plate.

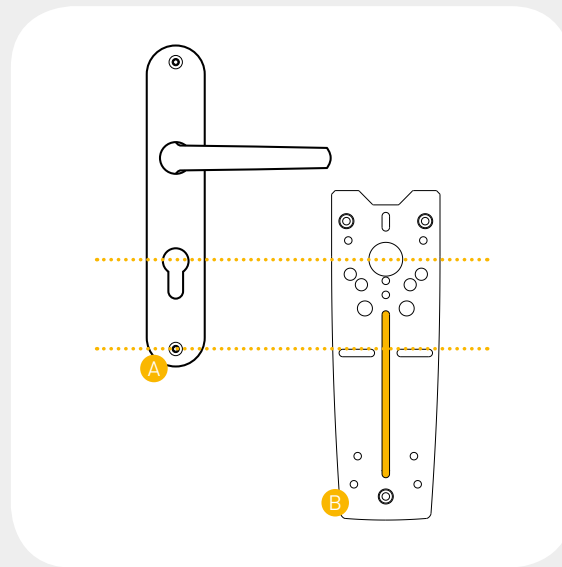
3 Doorlock installation



Position the connected doorlock on the cylinder fork.

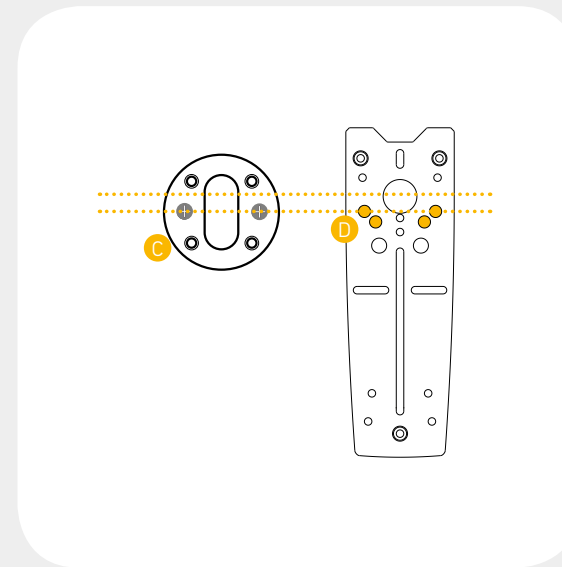
Appendix: Type of lock

Doorlock with a framed door level



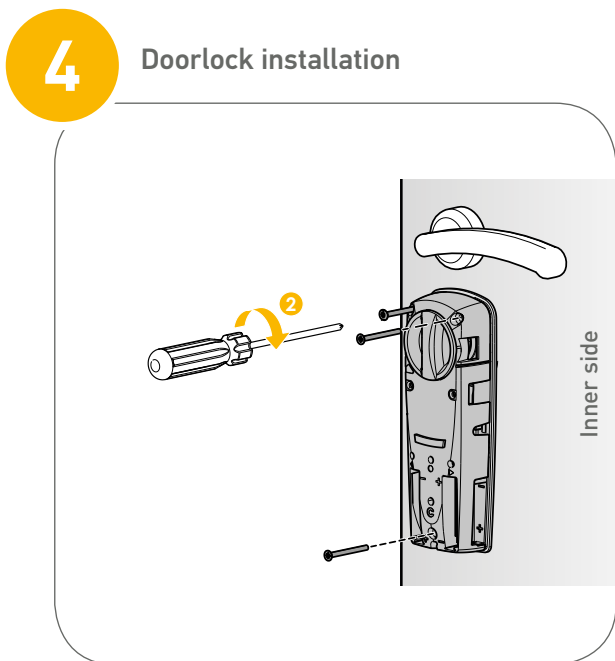
Unscrew the bottom screw (A).
 Position the back plate on top of the framed door level.
 Put the screw back in its whole (B).

Doorlock with an escutcheon

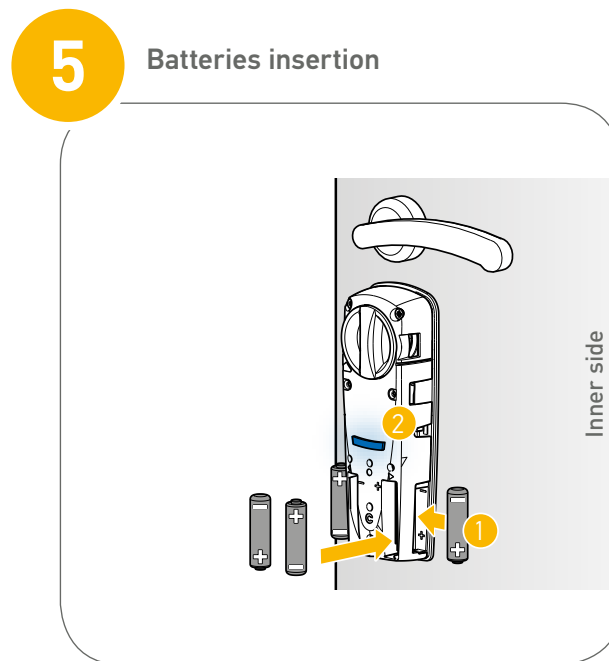


Unscrew the fixing screws (C).
 Position the back plate on the escutcheon.
 Put the screw back in its whole (D).

Installation of the connected doorlock



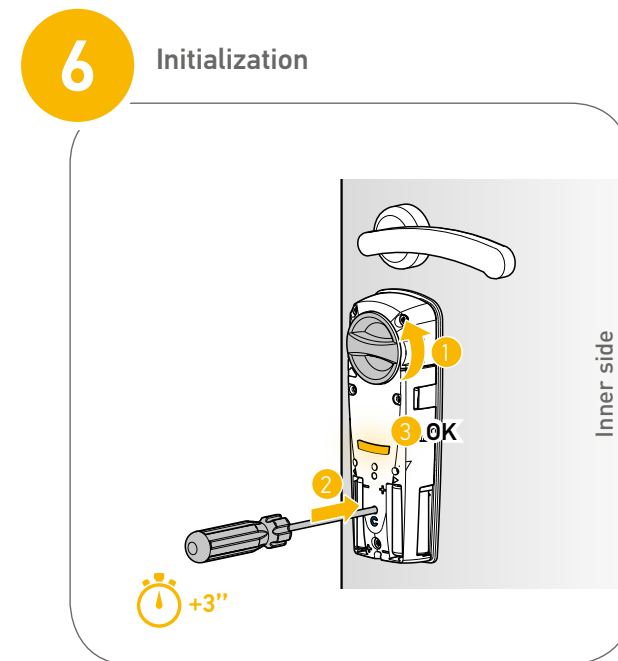
Fix the connected doorlock on the back plate with 3 fixing screws (E model).



Insert the 4 batteries, observe the correct polarity when inserting the batteries and make sure they are fully inserted.

The connected doorlock lights blue meaning it works well.

(See explanation of lights codes p.18)

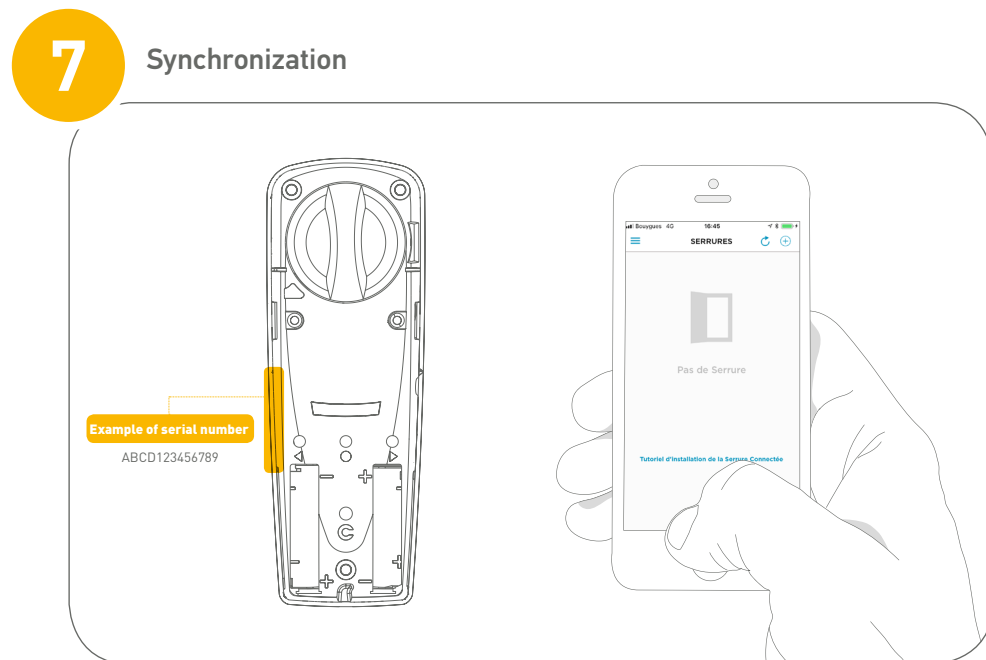


The connected doorlock is going to analyse the door.

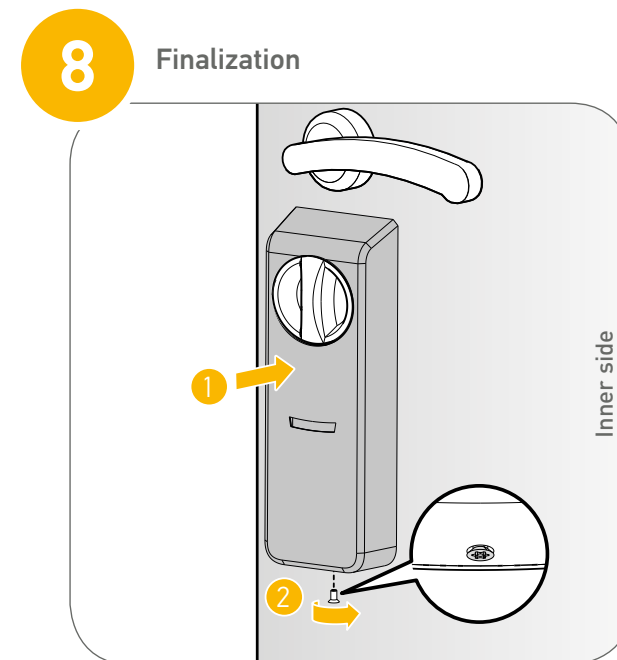
Close the door and manually lock the doorlock. Press the C hole bottom for 3 sec.

The motor performs a learning cycle. A green light and 3 beeps will confirm the end of the procedure.

Installation of the connected doorlock



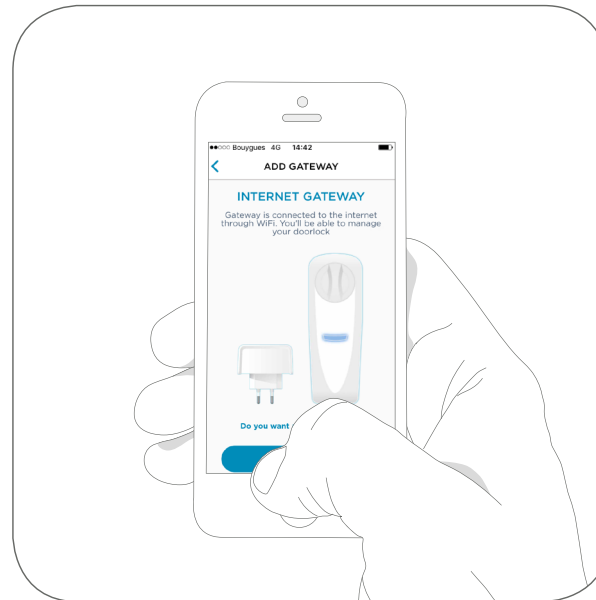
If it is not already done, download Somfy Keys app.
 Create your account.
 Add and set up your doorlock by following the steps indicated on the app.



At the end of the installation and setting up of the doorlock, clip the metallic casing.
 You can fix it with the **F** model screw.

Adding an Internet gateway

The gateway makes the connected doorlock remotely controlled



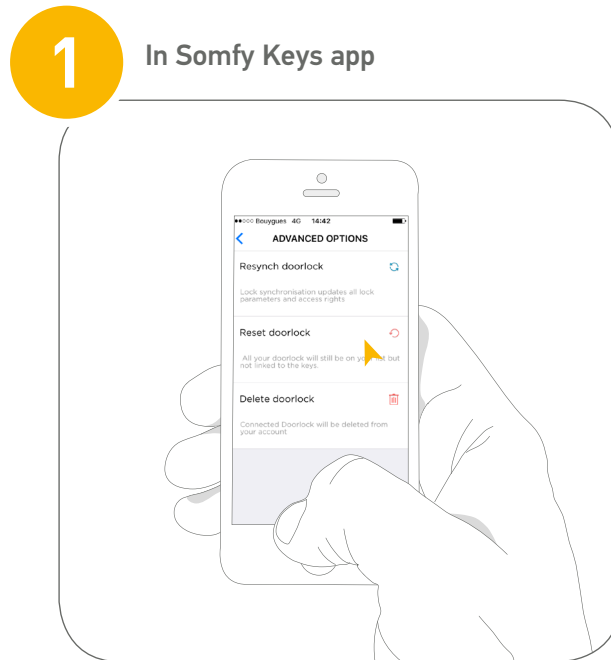
1. Connect your smartphone to the WiFi network.
2. In Somfy Keys app, go to Internet gateway tab and follow the instructions. Select the WiFi network and tape in its password.
3. Plug the Internet gateway into a power supply (up to 7m from the doorlock). It blinks yellow and blue.
4. Connect the smartphone to the GATEWAY_..... WiFi network of the Internet Gateway.
5. The Internet gateway blinks green at the end of the set-up.

Fonctionnalités de la gateway

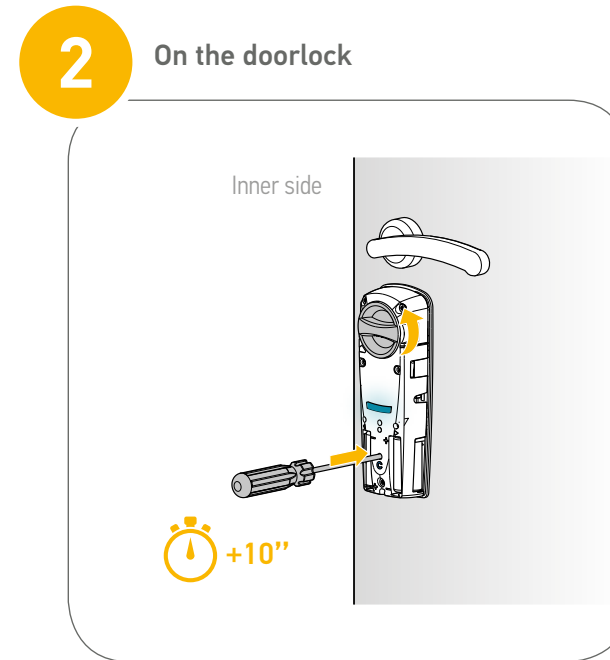
GATEWAY	WITHOUT gateway	WITH gateway
Tags management in real time	✗	✓
Lock / Unlock remotely	✗	✓
Availability of the lock status	Yes, with the app in BLE mode	✓
Availability of the lock history	Yes, with the app in BLE mode	✓
Notifications of the lock openings/closings with the mobile app	✓	✓
Notifications of the lock openings/closings with Badge Reader (with or without keypad)	✗	✓
Tahoma compatibility	✗	✓

Reset of the connected doorlock

It programs the connected doorlock in factory setting



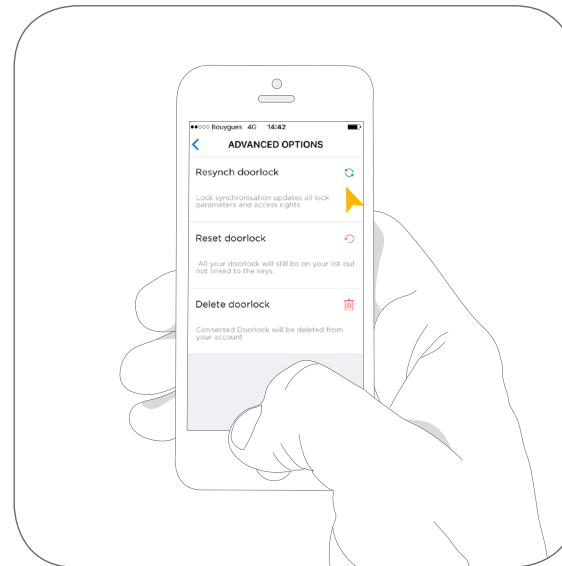
Open the app Somfy Keys
On the lock screen, go to «manage access»
and then «settings»
click on «Advanced options» and «Reset
doorlock».



Unscrew the screw under the doorlock.
Remove the metal casing.
Lock the doorlock.
Press the «C» reset button for 10 seconds.
The doorlock is going to move and blink green
3 times.

Resynchronization of the connected doorlock

«The doorlock resynchronization updates all the data of the doorlock.
It is done automatically when there are setting changes on Somfy Keys.
It can also be done manually. «



Open Somfy Keys.
On the lock screen, go to «manage access»
and then «settings»
click on «Advanced options» and «Synchronize
your doorlock»

Batteries

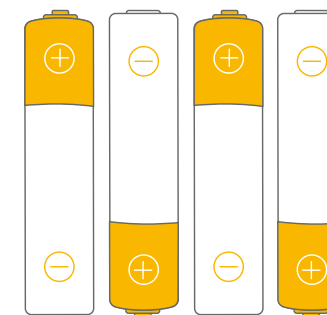
Terms of use:

- . Do not mix lithium, alkaline, conventional (carbon-zinc) and rechargeable (nickel-cadmium) batteries.
- . Do not mix new and old batteries.
- . Use only the specified type of battery or their equivalent.
- . Observe the correct polarity when inserting the batteries.
- . Remove the old batteries from the connected doorlock.
- . Do not short cut the power feed terminals.
- . Dispose of the batteries in an appropriate way.
- . Do not dispose of the connected doorlock in a fire: its batteries may explode or leak.
- . Do not swallow the battery. If the battery is swallowed, it can cause chemical burns, and, in just 2 hours, can cause death. If this happens, call a doctor immediately.
- . If the battery compartment is not well closed, do not use the product and keep it out of the reach of children.

Batteries change and end of life:

- . The connected doorlock will indicate you when you'll have to replace the batteries. It'll blink orange before each lock or unlock. The Somfy Keys app will also warn you of a low battery level.
- . Proceed in the same way as the installation to replace the batteries.
- . We recommend you to use lithium batteries.

4 Lithium batteries



Technical characteristics

Technical characteristics of the motor :

Radio frequency : 2.4 GHz

Frequency bands and maximal power used 2402 - 2480 MHz - E.r.p. < 25 mW

Bluetooth lock 4.0 (BLE)

Bluetooth range : approximately 7m

Motor with automatic declutching

6V  800 mA AAA Lithium

Operating temperature : 0°C up to +60°C

End position automatic self learning

Maximum number of users per doorlock 20

Technical characteristics of the cylinder :

Compliant with the EN1303 (2006) standard

Classification: 16000C32

Number of pins : 5

Anti-breakage

Anti-pull

Anti-drill

Supplied with 3 keys + Property card

Technical characteristics

Technical characteristics of the gateway :

Radio frequency	2.4 GHz
Wi-Fi range	30 m in open space 2400 to 2483.5 MHz e.r.p <100mW
Bluetooth (BLE) range	10 m in open space 2400 to 2483.5 MHz e.r.p <25mW
Simultaneous multiple power supply	230 V / 50 Hz / 10mA
Battery	Non
Part number	5128651
Distributor	Somfy F-74300 Cluses
Place of manufacture	Espagne
Dimensions	60x71,5x62 mm
Weight	75gr

Terms of use

Altitude : < 2000 m

Pollution index 2, Pol.2

Safety rating against ingress of foreign bodies IP30, EN 60529 2000 (A1).

Temperature : 0°C/ +60°C

Hydrometry : 85% RH at 30°C.

Accessibility

Accessible to the operator, not concerned by an installation and used restrictively by the authorised personnel.



Insulation category II:

Equipment that does not possess protection and is fully protected against dangerous voltages by reinforced insulation.



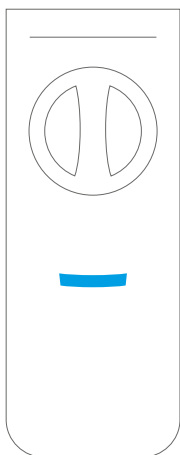
Product for indoor use.



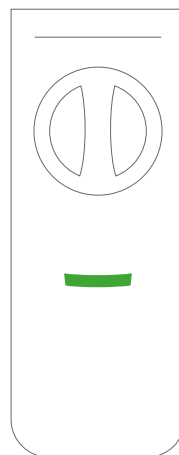
Danger electricity:

Presence of dangerous voltage inside the device.

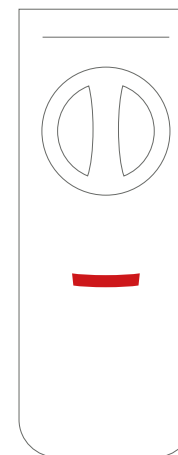
Light codes of the connected doorlock



Bluetooth communication



Doorlock unlocking

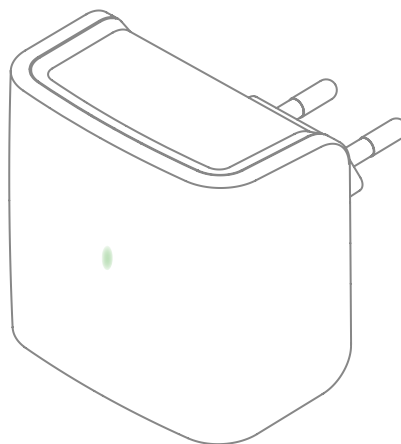


Doorlock locking

Other codes

Low batteries	●
Self-learning: <i>in progress</i>	● ● ● ●
Self-learning: <i>OK</i>	● ● ●
Self-learning: <i>Failure</i>	● ● ●
Installation or update: <i>OK</i>	● ● ●
Installation or update: <i>Failure</i>	● ● ●

Light codes of the gateway



Other codes

Gateway never configured (waiting for its first configuration)	● ● ● ●
Gateway waiting for its first configuration	● ● ● ●
Everything is OK	● ● ●
Failure	● ● ●

Security informations

Read carefully these installation and safety instructions before starting the installation of this Somfy product. Follow precisely all the given instructions.

Before the installation, check the compatibility of this Somfy product with the associated equipment and accessories.

This manual describes installation and use of this product. Any installation or use outside the scope defined by Somfy is non-compliant. This will likely cause, as the non respect of the instructions figured on the notice, the exclusion of the responsibility and warranty of Somfy.

Somfy can not be held responsible for changes in norms and standards that occurred after the publication of this notice.

General safety instructions

Do not let children play with the control point.

Do not expose the product to shocks or falls, flammable materials or heat, moisture, liquid splashes, or immerse it.

Do not attempt to repair it.

Terms of use

Do not use the product from the outside. The radio range is limited by the regulation standards of radio devices.

The scope of the control point depends strongly on the environment of use : possible disturbances by large electrical equipment near the installation, type of used material in the walls and partitions of the site.

Using radio devices (eg radio headphones) using the same radio frequency may reduce the performance of the product.»



SOMFY ACTIVITES SA hereby declares that the radio equipment covered by these instructions complies with the requirements of the Radio Directive 2014/53 / EU and the other essential requirements of the applicable European Directives.

The complet text of the UE statement is available on www.somfy.com/ce.



We care about our environment. Do not dispose of the appliance with usual household waste. Give it to an approved collection point for recycling. Give it to an approved collection point for recycling. Be careful to separate batteries from the others waste and to recycle it via the local system of collecting.

Garantie

This product has a warranty of 24 months from the date of purchase.

If a technical malfunctioning is noticed by a client when using the material, he has to check the good installation of the system in accordance with the instructions in the installation guide supplied with the equipment. If the malfunction is still there, the client can bring an action relating to the guarantee by submitting a request by phone or email to the concerned after-sales service.

After the processing of the application, which will check if the equipment can benefit from the warranty, the supplier will send a return slip of the equipment to the customer. When the good has been received, the aftersales service will confirm to the customer the follow-up given to his request by e-mail.

If the equipment is not supported by the warranty, it will be returned to the customer.



SOMFY ACTIVITES SA
50 avenue du Nouveau Monde
F - 74300 CLUSES
www.somfy.fr

NEED HELP ?

Forum

www.forum.somfy.fr

Hotline France

+33 820 055 055